

MEET OUR ENABLERS



India Foundation for Educational Transformation (IFET), located in Arunachal Pradesh, is a professional education-focused non-profit organization formed to **bridge educational inequities in the remote and hilly areas of India**. Their vision is to create peaceful, critically conscious, socio-economically powered communities, and they are doing it by addressing and mitigating the core problem of deprivation and lack of world-class education in the remote and far-flung hilly areas of India, where educational transformation and penetration is quintessential.



Karunodaya
Foundation



SHIKSHARTH
Every Community Contributes to Learning

MEET OUR ENABLERS



Quest Alliance is a not-for-profit trust that equips young people with 21st century skills by enabling self-learning. At Quest, they understand that **building a teacher's capacity** makes classrooms engaging. and engaging classrooms makes for empowered learners. They recognize that only by involving educators, civil society, industry and the government, can we create environments conducive to self-learning, so that today's youth can find and create purpose for themselves. It makes their efforts scalable and adaptable.



Karunodaya
Foundation



SHIKSHARTH
Every Community Contributes to Learning

MEET OUR ENABLERS



Odisha Rising Foundation (ORF) aims to advance the growth stories of Odisha to the globe. ORF is a social enterprise that incubate entrepreneurs and innovators. It helps the mediocre communities of Odisha to be self-reliant and autonomous through innovative projects and technological intervention so that everyone may live a life of self-worth and dignity. ORF partners with different stakeholders to curate, connect, catalyse and communicate the idea of new Odisha that is emerging beyond its big cities and facilitate the change process by focusing on rural & tribal development.



Karunodaya
Foundation



SHIKSHARTH
Every Community Contributes to Learning

MEET OUR ENABLERS



NAVSAHYOG
FOUNDATION

Life skills to Livelihood



Navsahyog Foundation was set up in February 2020. The foundation works towards **developing life skills and creativity in village children** in the age group of 5-14 years in Tamil Nadu and Karnataka through sports, storytelling, experiential learning and creative activities. NavSahyog's initiative lays a strong foundation for the children to take to entrepreneurship on growing up and create a superior livelihood for themselves and others. The vision of this foundation is a world where children in villages pursue their dreams and create superior livelihoods for themselves and others.



Karunodaya
Foundation



SHIKSHARTH
Every Community Contributes to Learning

MEET OUR ENABLERS



With a motto of creating an educational environment for underprivileged children, **Anubhuti**, founded in 2016 is becoming a **bridge between School and Community**. It that feels for the underprivileged section of society especially the children who are frequent dropouts due to multiple constraints and have no support to expose themselves to education. Their vision is to create lasting solutions that empower the stakeholders to bring about systemic change and empower stakeholders to create an egalitarian society.



Karunodaya
Foundation



SHIKSHARTH
Every Community Contributes to Learning

MEET OUR ENABLERS



TOMORROWSMITH
FOUNDATION

Tomorrowsmith Foundation dreams of a future where every child is reaching their potential with the help of passionate, innovative teachers who are creating safe, supportive, and inclusive learning spaces. They help **pre-service and fresh teaching graduates** build a respectable, better-paying, and joyful teaching career through a high-quality, tech-enabled, job-oriented integrated training program that provides skill training and practical teaching experience through masterclasses,, gamified teaching simulation, real classroom teaching, job preparation, and mentorship.



Karunodaya
Foundation



SHIKSHARTH
Every Community Contributes to Learning

MEET OUR ENABLERS



INVOLVE

Building Tomorrow

Involve was started in 2018 with a vision to Develop Agency in Students in Kanataka . Through the use of **Peer based teaching and learning**, they created a sense of ownership among learners while building their academic skills and future readiness. They have worked with 10,000+ students across urban, semi-urban and rural geographies. They have seen >25% improvement in basic numeracy among learners, and >80% students demonstrating improved confidence and communication skills.



Karunodaya
Foundation



SHIKSHARTH
Every Community Contributes to Learning

MEET OUR ENABLERS



MAARGA
Education . Empowerment . Selflessness



Maarga is a community led organisation of **deprived communities** along the path of forced migration, from distressed villages to slums and in cities of India with the aim of equitable distribution of resources – social and economic, and respect for human dignity, where deprived communities in rural and urban India are fearlessly enabled to voice their concern and ideas for change. .They build fraternal networks of institutions and individuals to **sustain ecosystems of habitat and productive livelihoods** for adults, and developmental opportunities through quality learning spaces for children English education, sports, music, art, cinema, the internet and popular culture.



Karunodaya
Foundation



SHIKSHARTH
Every Community Contributes to Learning

MEET OUR ENABLERS



Karunodaya
Foundation

Karunodaya is working towards **strengthening human values** within the society through education in Bihar. They are doing this by empowering the government schools in terms of building teacher capability, developing innovation labs to unlock student potential and focusing on innovative ways of teaching.



Karunodaya
Foundation



SHIKSHARTH
Every Community Contributes to Learning

MEET OUR ENABLERS



SHIKSHARTH

Every Community Contributes to Learning

Shiksharth, in Chattisgarh works in is a geopolitically challenging area, suffering from decade long armed conflict between Indian state security forces and left-wing extremist commonly known as Naxal Violence. Shiksharth is addressing the problem of **access to quality education** and improving the education status for Naxal affected tribal children. They intend to support the children through their intervention of reopening closed schools and bring back out of school children back to formal education system.



Karunodaya
Foundation



SHIKSHARTH
Every Community Contributes to Learning

MEET OUR ENABLERS



Library for All aims to **transform the learning of children** through school libraries in government and affordable private schools of Manipur. They are working towards ensuring that each and every child is able to read and comprehend English text appropriate to their grade by consistently engaging them with high-quality library resources and facilitation.

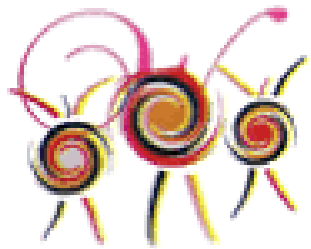


Karunodaya
Foundation



SHIKSHARTH
Every Community Contributes to Learning

MEET OUR ENABLERS



TWHHI



Women's helping hands empower women, children and young adults through skill acquisition programs, mentoring, counselling, rehabilitation and giving of physical aids. Their vision is to impact the society so that it **recognizes the importance of gender equality**, abolish abuse and empower women. TWHHI among other things has undertaken to train women in vocations that can easily be translated into a steady source of income. They also assist in the rehabilitation of abused women by providing shelter, legal assistance, thorough counselling and skill acquisition.



Karunodaya
Foundation



SHIKSHARTH
Every Community Contributes to Learning

MEET OUR ENABLERS



Vidhya Vidhai
Seed for Education



Quality education has the potential to prepare every child for life. With this, **Vidhya Vidhai** is implementing its **whole school transformation and cluster transformation program** by ensuring best teaching learning practices, improving structures and processes promoting quality learning environment and developing a culture of trust, respect and inclusivity in schools in Tamil Nadu and Puducherry



Karunodaya
Foundation



SHIKSHARTH
Every Community Contributes to Learning

MEET OUR ENABLERS



SANJHI SIKHIYA



Sanjhi Sikhiya intends to **transform Punjab by empowering young individuals** who wish to work towards improving the education in Punjab. They are enabling this through Punjab Youth Leaders Program which is a leadership development program. During these two years, the young leaders work towards improving the learning and governance in the government primary schools in Punjab. The aim of the program is to create a strong community of future leaders which is committed to transform Punjab into a land of Hope, Courage and Possibilities in the next 30 years.



Karunodaya
Foundation



SHIKSHARTH
Every Community Contributes to Learning

MEET OUR ENABLERS



Gramothhan is operating in a remote tribal geography in Odisha which is disconnected and portrays challenges like lack of proper roads, health care facilities and widespread illiteracy. Beating all these obstacles, the organization is working towards **providing quality education and holistic development** to every child. Through this they are aiming at strengthening the public education system where the community takes ownership of education transformation.



Karunodaya
Foundation



SHIKSHARTH
Every Community Contributes to Learning

MEET OUR ENABLERS



Ashayen is a youth lead institution working with the **children who are living on the street** in the urban areas of Odisha State in order to **ensure them a dignified life through education** and trying to develop an ecosystem where children living on the street can get their educational rights and lead their life freely. Apart from that Ashayen working on systemic educational change in education system of Odisha through different school programme where every last child can access education.



MEET OUR ENABLERS



SRM Foundation is a NGO in Udaipur district directly benefitting thousands of youth and their families every year. They are working on **education, healthcare, livelihood and saving environment**, in remote villages and slum across the region Mewar. They vision a future where the possibilities, opportunities and dreams are the same for all the youth, regardless of sexual orientation and gender identity. They aim to transform the lives of the youth at mortal risk providing them and their future generations a productive future and eternal hope.



Karunodaya
Foundation



SHIKSHARTH
Every Community Contributes to Learning

MEET OUR ENABLERS



**SHARE ॐ BOOK
INDIA ASSOCIATION**

read, imagine, grow!



Share A Book India Association's mission is to set up a library in every school in India and **make reading accessible to all**. True to their motto, they want each child to "Read, Imagine, Grow"! At Share A Book India Association, they believe that reading must become a focus area and a movement which involves everyone in order to improve the literacy standards prevalent across India. The idea is to let no child be a school dropout, **empower** them with basic comprehension skills, and most importantly avoid students going beyond primary education without fully mastering lifelong skills



Karunodaya
Foundation



SHIKSHARTH
Every Community Contributes to Learning

MEET OUR ENABLERS



Barefoot Academy of Governance focus on **deepening democracy within governance processes** through change interventions, using the Tamil concept of Koodam as a tool to restructure and empower the individual and the institution. It's an initiative to democratise the process of governance and ensure a secure, sustainable future for the unreached.



Karunodaya
Foundation



SHIKSHARTH
Every Community Contributes to Learning

MEET OUR ENABLERS



Shraddha Maanu Foundation seeks to **end educational discrimination against underprivileged children and socio-economic discrimination against educated women.** Their methodology is two-fold which includes helping female college graduates attain meaningful employment through teaching-training and enabling lower-income children to access quality after-school education to keep up with their privileged peers. They aim to provide every underprivileged child joyful learning from dependable teachers; and every underprivileged educated woman the agency and empowerment to gain pride from her work



Karunodaya
Foundation



SHIKSHARTH
Every Community Contributes to Learning

MEET OUR ENABLERS



Feathers's mission is To Build Foundation for Enabling Action to **Transform Human Excellence** with Resilience and Self-reliance. They envision An Inclusive Society with Enshrined Values of Equality, Equity and Humaneness. They work hand-in-hand with the parents to initiate the process of helping their children with special needs achieve their fullest potential.



Karunodaya
Foundation



SHIKSHARTH
Every Community Contributes to Learning

MEET OUR ENABLERS



Neev Shikshan Sanstha are trying to bridge the developmental loss that children had to bear. UMANG and UNNATI, their programs, are specifically designed to **bridge the learning gap** for more than 1000 children coming from underprivileged communities. They are providing them with cost-effective Activity Based Learning Material to help the children learn in a more playful manner moving away from the regressive rote learning methods.



Karunodaya
Foundation



SHIKSHARTH
Every Community Contributes to Learning

MEET OUR ENABLERS



गणित-विज्ञान की एक प्रयोगशाला आविष्कार

Aavishkaar – Center for Science, Math, Arts and Technology

Aavishkaar is a center where motivated teachers and young thinkers find a platform to **unlearn topics** they had studied long ago in school through the traditional method of teaching and learn a creative, curious and critical thinking approach to education. They have become a pioneer in **delivering high-quality Science and Math education** through various teaching methods and pedagogies, reaching out to some of the most remote schools and communities in the country.



Karunodaya
Foundation



SHIKSHARTH
Every Community Contributes to Learning

MEET OUR ENABLERS



Kargil, being on the border and 3 wars in the past affected the pace of educational, social, economic and political advancements. Due to its remote location and slowed development Health and Education have been affected the most. Apart from the difficult geographical terrain and harsh winter months ,a conservative and patriarchal mindset is causing huge gender biases especially in educating girl child and high dropout rate. **rZamba** is working towards **bridging the gaps in the present education system in Kargil** and connect resources; existing policies and local, international best practices to the schools.



MEET OUR ENABLERS



The focus of current education system is more on academics and little on holistic development. This leads to widening learning gaps amongst students. Catering this, **Mera Gaon Meri Duniya** is working towards **unlocking the limitless potential of the children**. They are doing this by enabling schools in rural community to nurture holistic development by empowering school leaders, teachers and the community.



MEET OUR ENABLERS



THE APPRENTICE PROJECT

An initiative under Mentor Me
India

The Apprentice Project is empowering children from low-income communities with Financial Skills, Choices, and Social and Emotional Skills to thrive in the current world. They have **built an Ed Tech solution** to teach 21st-century skills (Digital Literacy, Social and Emotional Learning, and Financial Literacy) to middle and high school students from low-income families in India. They also use a WhatsApp chatbot (TAP Buddy), powered by a natural language processor and artificial intelligence-based technology, along with gamified behavioural nudges, which makes the learning personalised, yet the model highly scalable for 100 million children.



Karunodaya
Foundation



SHIKSHARTH
Every Community Contributes to Learning

MEET OUR ENABLERS



Population Foundation of India engages strategically with policymakers, influencers and the media by providing compelling evidence on population issues to inform and inspire decision making. Through our work, we strive to **shift the family planning and population discourse from being target-oriented, to gender-sensitive and rights-based**. Accountability is at the core of Population Foundation of India's work on community action to ensure efficiency and accountability in public health systems.



Karunodaya
Foundation



SHIKSHARTH
Every Community Contributes to Learning

MEET OUR ENABLERS



Myra foundation aims to provide **quality education and a platform for holistic development for less privileged children**. They want to bridge the learning gap, to allow “non -school” going or “drop out” children to join school again. They wish to create a safe learning environment for children with Special Needs and provide support to their families. They also intend to build a strong parent network as well. As technology is a big part of the education system, they integrate technology in teaching to support learning for all children. In this process, they also empower teachers by providing them with updated teaching skills.



Karunodaya
Foundation



SHIKSHARTH
Every Community Contributes to Learning

MEET OUR ENABLERS



SwaTaleem works in Kasturba Gandhi Balika Vidyalaya (KGBVs). These residential schools are specifically designed to educate minority girls in India. They are throughout the country in what is known as Educational Backward Blocks catering to 6th-8th standards (sometimes 9th -12th). Over time, KGBVs have battled multifold challenges in fulfilling the vision they were set up for. They are characterized by poorly paid teachers, lack of educational resources, and lack of educational training programs. Addressing this issue, SwaTaleem is building a thriving environment for student leaders, teachers, wardens, and administration by creating a network of KGBVs and developing socio-emotional skills and cognitive skills.



Karunodaya
Foundation



SHIKSHARTH
Every Community Contributes to Learning

MEET OUR ENABLERS



Varitra Foundation works on **transforming rural government schools into quality education spaces** in the state of Haryana. They work with rural communities who are struggling with low representation, low participation due to low awareness level, negative perception towards government schools and inclination towards private education despite non-affordability. A lot of social problems like early marriage, high infant mortality rate, alcoholism, health issues, etc. are also prevalent across these villages. Varitra intends to resolve these problems by empowering the people within these communities through creating opportunities for quality education and leadership-building.



Karunodaya
Foundation



SHIKSHARTH
Every Community Contributes to Learning

MEET OUR ENABLERS



Mimaansa works to promote acceptance of the special needs of children with learning disabilities and to enable them to reach their full potential. It visions that all government schools are meaningful and inclusive spaces for learning and personal development of students with learning disability. It's mission is to strengthen government schools by providing exemplary remedial education and counselling services and advocate systemic change to create an integrated environment for children with learning disability



Karunodaya
Foundation



SHIKSHARTH
Every Community Contributes to Learning

MEET OUR ENABLERS



EDUCATE - INSPIRE - INNOVATE

Society for Space Education Research and Development (SSERD) is a community committed to elevating and fostering space and research education universally. We emphasize on providing an **innovative and exciting hands-on space education**. It is an intriguing as well as a salient subject for the young generation. They foresee a world with a command on the unexplored celestial bodies and planets. They strive to make astronomy and space education a lot more accessible. To highlight one of their principal objectives, they create and nurture the love for deep space and science.



Karunodaya
Foundation



SHIKSHARTH
Every Community Contributes to Learning

MEET OUR ENABLERS



Shikha Academy was founded on the belief that with opportunity, motivation and support, all students can find the pathway to their greatest potential for excellence in work and life. As a school, they hope to create a **model of high-quality learning exclusively for low-income students**. With the right knowledge, skills, and values, they can be joyful, productive, and impactful leaders of their communities, the nation, and the world



Karunodaya
Foundation



SHIKSHARTH
Every Community Contributes to Learning

MEET OUR ENABLERS



Prayaan, founded in 2017 grew into what we see today with myriad projects to **ensure the participation of backward communities in nation-building** by supporting the grassroots, educating all their children, and reinstating school dropouts, along with raising their educational and economic standards. PRAYAAN places a strong focus on supporting the government and its agencies in reaching out with their diverse empowerment and development programs to the under-privileged strata, those classes to whom education has always been beyond reach.



Karunodaya
Foundation



SHIKSHARTH
Every Community Contributes to Learning

MEET OUR ENABLERS



NEAID is an organization led by people from the region voluntarily to **support sustainable and integrated development-based initiatives in Northeast India**. NEAID operates in the region across a range of thematic areas with special focus on well-being of children and women. NEAID also envision providing platform to other National and International organizations that are willing to bring a positive change in the region and want to widen their initiatives through collaboration and knowledge sharing. It's vision is to create and live-in an equitable and prosperous society through integrated development.



Karunodaya
Foundation



SHIKSHARTH
Every Community Contributes to Learning

MEET OUR ENABLERS



JEEVAN
STAMBH
FOUNDATION



JEEVAN STAMBH FOUNDATION IS A GROUP OF COMMITTED VOLUNTEERS BASED OUT OF DELHI, THAT STARTED AS **#MIGRANTTRAVELSUPPORT** WITH THE OBJECTIVE TO ADDRESS THE IMMEDIATE NEEDS OF THE STRANDED MIGRANTS AND THEIR FAMILIES DURING THE COVID-LED LOCKDOWN, WHICH INCLUDED PROVIDING THEM WITH FOOD/RATION, HYGIENE/MEDICAL AID AND ARRANGING TRAVEL TO HELP THE STRANDED MIGRANTS REACH THEIR HOME SAFELY. SOON AFTER, THEY STARTED EXPANDING THE AMBIT OF THEIR RELIEF WORK TOWARDS **REBUILDING LIVES & RESTORING LIVELIHOODS** BY CONNECTING THEM TO PROBABLE EMPLOYERS AND/OR BY HELPING THEM START/RE-START THEIR WORK THROUGH SMALL YET SELF-SUSTAINABLE BUSINESSES.



Karunodaya
Foundation



SHIKSHARTH
Every Community Contributes to Learning

MEET OUR ENABLERS



Adhyayan Foundation seeks to improve the leadership and governance of teaching and learning in schools. Adhyayan's team members have been refining the process of evidence-based self-review, benchmarked against global and Indian best practice, for the last 6 years across 390+ schools in 27 States through Adhyayan Quality Education Services, our social enterprise.



Karunodaya
Foundation



SHIKSHARTH
Every Community Contributes to Learning

MEET OUR ENABLERS



PI JAM FOUNDATION

Pi Jam Foundation is a Non-Profit Organization established in September 2017. They aim to **equip children and educators of India with access to affordable technology and enhanced quality of Computer Science education.** They aim to provide access to affordable open source hardware/software that reduces entry barriers for experimentation and promotes global knowledge sharing and enhance the quality of computer education by developing a curriculum that fosters essential skills like programming, problem



Karunodaya
Foundation



SHIKSHARTH
Every Community Contributes to Learning

MEET OUR ENABLERS



TEACHFORINDIA

At **Teach For India**, they believe **leadership for education** is the solution. They are building a movement of leaders who will **eliminate educational inequity in India**. To build a growing movement of leaders, Teach For India runs a two year Fellowship and supports an unstoppable Alumni movement. The Teach For India Alumni movement is a growing community who work towards educational equity at all levels of the education system. Alumni start their own organizations or hold key positions of leadership, both within and beyond the education sector, enabling them to impact the lives of millions of children collectively.



Karunodaya
Foundation



SHIKSHARTH
Every Community Contributes to Learning

MEET OUR ENABLERS



Youth Empowerment Foundation's main focus is providing basic needs for children- water, food, clothes, home, and education. Food, education, and health are the three key issues that will be supported by all donations. For more than five years, our project has worked with numerous underprivileged groups of children in India. They have saved more than 10,000 lives last year, and they believe that no kid in India should ever go to bed hungry and afraid. They intend to double this number this year.



Karunodaya
Foundation



SHIKSHARTH
Every Community Contributes to Learning

MEET OUR ENABLERS



Samadhan Foundation have been providing services to the society for more than 20 Years and has helped many people in **recovering from bad habits and quitting them permanently**. Samadhan Foundation thrives to make our society better by each passing day and they believe to make a better tomorrow, we need to change ourselves today and take steps in the right direction. They help people recover from their bad habits by following a Holistic approach and providing optimum care



Karunodaya
Foundation



SHIKSHARTH
Every Community Contributes to Learning

MEET OUR ENABLERS



NimbleQ addresses the growing skills gap through a holistic program focused at **building leaders and entrepreneurs** for tomorrow. Their programs facilitate children (Kindergarten - 10th grade) to learn Technology along with Business Acumen and Financial Intelligence to develop a problem-solving mindset. This combination enables children to develop creative and analytical thinking skills, necessary to cope with an ever-changing future.



Karunodaya
Foundation



SHIKSHARTH
Every Community Contributes to Learning

MEET OUR ENABLERS



Magic Bus India Foundation envisions a world in which marginalized young people are provided the opportunities to emerge from poverty to lead fulfilling lives that positively contribute to their communities and future generations. As vulnerable young people transition to adulthood, they aim to equip them with the necessary **skills for a sustainable livelihood and promising future**. They continue to build on our program's impact with a steadfast commitment to enable youth aged 12-18 to complete secondary education and young adults aged 18-25 to attain necessary skills for a stable job.



Karunodaya
Foundation



SHIKSHARTH
Every Community Contributes to Learning

MEET OUR ENABLERS



Renukiran Welfare Foundation is committed to **bring wings to underprivileged children by facilitating quality education.** They believe in our mission statement, it reflects that education can solve problems from the roots because it can bring prosperity to an individual's life. Along with helping underprivileged children, RenuKiran Welfare Foundation is also working in other areas such as women empowerment and wildlife preservation. Magic Bus India Foundation



Karunodaya
Foundation



SHIKSHARTH
Every Community Contributes to Learning

MEET OUR ENABLERS



alokit

Alokit hone the leadership competencies of school leaders to **drive improved system and school outcomes**. They conduct workshops and leadership retreats focused on our 'Education Leadership Framework'. The themes cover Personal Leadership, Strategic Leadership, Academic Leadership and People Leadership. They provide one-on-one in-person and virtual support, enabling school leaders to implement their learnings from the workshops in their schools. They also support their partners and governments in their leadership recruitment by **redefining the recruitment process**.



Karunodaya
Foundation



SHIKSHARTH
Every Community Contributes to Learning

MEET OUR ENABLERS



MakerGhat's vision is to support underserved youth in becoming leaders and entrepreneurs who can enable social and economic change in their communities. To support this movement, they create low-cost brick-and-mortar labs that embody a do-it-yourself mindset or culture of 'making'. Through such safe, open, and resourced community spaces, their goal is to spark a cultural shift in who is part of and drives innovation in India and beyond.



Karunodaya
Foundation



SHIKSHARTH
Every Community Contributes to Learning

MEET OUR ENABLERS



To Nurture the Nomadic Communities

The Nomadic Communities are a neglected lot underserved by the state. Our innovative educational model, Nutritional support and livelihoods have created historic changes and development. **Vanavil Trust** was started in 2005 in the aftermath of Asian Tsunami of 2004 to support children of two Nomadic communities, Boom Boom Mattikarars and Narikuravars, in Tamil Nadu. After 17 years of working with the communities, Vanavil now has grown into an organisation with multiple projects that are **aimed to support the education of the children from the nomadic tribal communities.**



Karunodaya
Foundation



SHIKSHARTH
Every Community Contributes to Learning

MEET OUR ENABLERS



“ Sparsha” means “touch” in many Indian languages. **Sparsha Charitable Trust** is a non-profit organization based in Sion, Mumbai, and **aims to touch the nearby underprivileged communities providing access to basic human needs and help them to achieve better and sustainable living circumstances.** SPARSHA Believes That - If Children (In The Age Group 6 -18) Have Access To Safe And A Supportive Environment, Opportunities For Education, Then This Will Lead To An Increase In Their Overall Development, Exposure To Various Life Situations, Pace Of Learning, Eventually Resulting in Unfolding Of Their Potential. Thus, A Change In Public (Community And Systems) Perception Which In Turn Will Drive The Eradication Of Child Labour, Literate Society And Other Social Evils exploiting Them.



Karunodaya
Foundation



SHIKSHARTH
Every Community Contributes to Learning

MEET OUR ENABLERS



'Khetee means farming in Sanskrit. **Khetee** is a non-governmental organization based in Durdih village, Bihar, India. The organization focuses on **improving the agronomic status in Bihar**. They are doing community development through ecological agroforestry and education projects for farmers and rural communities. reNature and Khetee work together on utilizing Regenerative Agroforestry to fight flooding and droughts and provide economic opportunities in the area.



Karunodaya
Foundation



SHIKSHARTH
Every Community Contributes to Learning

MEET OUR ENABLERS



Upkram Educational Foundation is a not-for-profit organization. They work on **improving the learning outcomes of children from underserved communities in rural public schools** of Sonbhadra by supporting their foundational literacy challenges for better life outcomes. Their focus area is children from underserved communities face foundational literacy challenges leading to poor learning and life outcomes. Acknowledging the significance of the problem, they have a three-fold approach where we engage children in thematic language sessions, build the capacity of teachers in language education and develop a cohort of young women and youth who ensure a systemic change can take place through education.



Karunodaya
Foundation



SHIKSHARTH
Every Community Contributes to Learning

MEET OUR ENABLERS



Educo India manages Saibaba Path Mumbai Public School (SPMPS) in partnership with the MCGM under the School Support Program. It is modern english school - medium primary and secondary school that provides high quality, contemporary and balanced education in a nurturing environment for underprivileged children of Lalbaug area of Mumbai. The students at Educo are given tuition-free education Their curriculum is focused on **providing holistic education to their students** across four focus areas - holistic child development, pedagogy and teacher development, government outreach and community engagement.

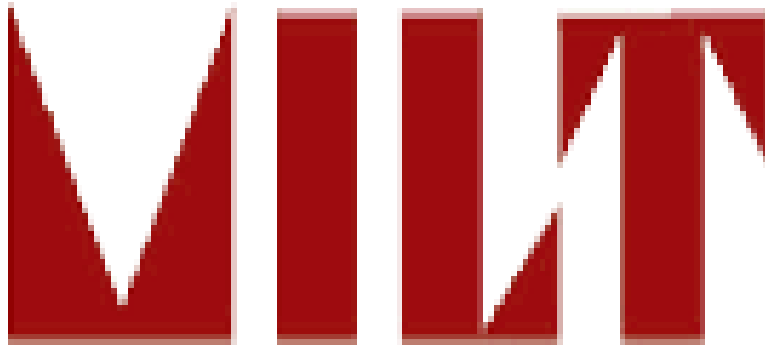


Karunodaya
Foundation



SHIKSHARTH
Every Community Contributes to Learning

MEET OUR ENABLERS



MILT Charitable Trust, Bengaluru is a registered forum of a group of individuals MILTONIANS who are alumni of MILT leadership programme. The conviction that **service to society in general and contribution to the less fortunate in particular is as important as one's quest for excellence in their chosen endeavor, spurs this group of people ahead.** The accent here is not at all on quantity but on quality, a commodity so scarce. Rightfully, this effort is aimed at fulfilling MILT mission statement “LET THIS WORLD BE A LITTLE BETTER PLACE BECAUSE WE CAME HERE”



Karunodaya
Foundation



SHIKSHARTH
Every Community Contributes to Learning

MEET OUR ENABLERS

PROJECT SECOND CHANCE

Reformation | Rehabilitation | Reintegration



Project Second Chance aims to **reform, rehabilitate and reintegrate at risk youth between ages 18-21 years through an impact oriented 360 degree intervention**. It is the first of its kind intervention that is shifting the prison reform ecosystem in India by putting the onus of new ideas and solutions into the hands of committed stakeholders close to the problem, especially inmates or people with incarceration backgrounds through a one year, full time fellowship program called Second Chance Fellowship where prisoners/ex-prisoners become social entrepreneurs to solve the systemic issues of prisons. Their vision is to create a cadre of innovative change-makers and leaders who will reimagine, revamp and reform the prison ecosystem and build an effective and safe system that is neither biased nor unfair safeguards inmates' rights and ensures justice is delivered equitably.



Karunodaya
Foundation



SHIKSHARTH
Every Community Contributes to Learning

MEET OUR ENABLERS



Adiksha Foundation is a non-government organisation **dedicated to habilitation of individuals with autism, cerebral palsy, intellectual disabilities and others with special needs.** Adiksha Foundation was formulated with a vision to promote and establish inclusive practices in educational institutions, workplaces and communities to enable special needs individuals to assume socially valued roles. They aim to fulfill the educational needs of children with autism, cerebral palsy, and intellectual disabilities especially the underprivileged and the marginalised and develop a pool of skilled personnel to take specialised services in the field of education and vocational training to semi-urban and rural areas.

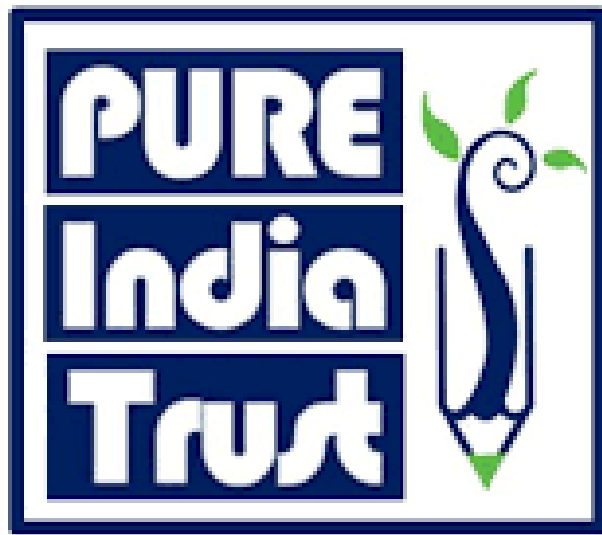


Karunodaya
Foundation



SHIKSHARTH
Every Community Contributes to Learning

MEET OUR ENABLERS



Pushp-kiran Union for Real Enlightenment started with a mission to **provide quality Education & Employment opportunities to under-served communities of rural & urban slums**. Their key focus areas are education for Everyone (Pathashala), Women Empowerment (My Village My Business), Skill development (Kaushal-Kiran), Career Mentoring (Marg Darshak) and Adopt a school. They are running Informal Education Centers for strengthening educational foundations, Provide Scholarships for higher Education, Conduct Career Guidance workshops in Govt Schools, Encourage women to become Entrepreneurs, Provide Skill development trainings & nurture talent to become future Hero in various fields e.g. Sports, Art, Music, Culture, Yoga etc.



Karunodaya
Foundation



SHIKSHARTH
Every Community Contributes to Learning

MEET OUR ENABLERS



Dream a Dream works with 10,000 young people a year through their two innovation labs – After School Life Skills Programme and Career Connect Programme and have trained over 9828 teachers/educators from 206 partners impacting over 2,45,700 children and have impacted over 1 million children through strategic partnerships with state governments in Delhi, Jharkhand, Karnataka, Telangana and Uttarakhand. They exist to **empower young people from vulnerable backgrounds to overcome adversity and thrive in a fast-changing world.**



Karunodaya
Foundation



SHIKSHARTH
Every Community Contributes to Learning

MEET OUR ENABLERS



Equilibrium
Foundation®

Equilibrium Foundation is a non-profit social impact organisation based in Hamburg, Germany with the social vision to **create a fairer world and a greater social and economic balance between disadvantaged and privileged people in the global south**. They achieved social impact through their social mission to empower disadvantaged people, multipliers, micro-entrepreneurs and non-profit organisations in the global south. Following their principles and their shared set of values, especially with our core values of empathy and respect, we act according to our motto: “Act Local, Think Global” to create a fairer world. All activities of the Equilibrium Foundation are based on the fundamental principles of humanism, ethics and positivism. Build on these values, they promote sustainable empowerment of disadvantaged people in the global south.



Karunodaya
Foundation



SHIKSHARTH
Every Community Contributes to Learning

MEET OUR ENABLERS



STEP TOWARDS EDUCATED AND RESPONSIBLE SOCIETY works towards **Peacebuilding through Education**. Their goal is to create 1 lakh adaptive leaders from Jammu, Kashmir and Ladakh and to create using a Creative Activism Module, to educate and create changemakers to resolve local community issues by 2024. Their vision is to build an adaptive leadership with youth for bringing social change and community transformation.

MEET OUR ENABLERS



Samavesh work focus on **Notify and denotify community to come in the main stream.** They work for the andtitlement,awareness,education,organize to community and also :

- 1)To work for justice and rights as per the provisions of the Indian Constitution.
- 2) To ensure that religious freedom is achieved without fear of any kind.
- 3) Strengthen democracy and secularism.
- 4) Celebrate national and international days for peace and justice
- .5) Raise awareness of various government schemes and take government departments to the people to benefit the scheme.
- 6) To ensure that innocent victims of different types of violence get justice.



MEET OUR ENABLERS



Khamir is a platform for the crafts, heritage and cultural ecology of the Kachchh region of Gujarat. Instituted after the earthquake of 2001, it is a space for **engagement and development of Kachchh's rich creative industries**. It works to strengthen and promote the rich artisanal traditions of Kachchh district. At Khamir, they strive to create a democratic and empowering space - a common roof under which a range of stakeholders can exchange ideas and collaborate. They work to shift consumer perspectives and raise the cultural value placed on crafts. Their vision is of a vibrant, sustainable Indian craft sector in which crafts and artisans alike are highly valued by people worldwide.



Karunodaya
Foundation



SHIKSHARTH
Every Community Contributes to Learning

MEET OUR ENABLERS



Little Millennium has served more than 1,30,000 families since it's inception. The Preschool has been recognized as the best Preschool in India, time and again. Little Millennium Play School has been at the forefront of **bringing innovative products in the early child care and education space in India**. Our unique seven petal preschool curriculum ensures holistic development of every child based on sequential learning and development milestones.



Karunodaya
Foundation



SHIKSHARTH
Every Community Contributes to Learning

MEET OUR ENABLERS



Manav Sadhna has been humbly serving since 1995 to strengthen underprivileged communities in Ahmedabad through programs in Holistic Education, Nutrition, Health and Hygiene, Community Building, Livelihoods, Compassion In Action and Disaster Relief. By seeing God in every individual (manav), they believe service is transformed into worship (sadhna). Although there is great diversity amongst our programs, they are all based on people's participation and evolve according to the needs of the community. Over time, they have seen these efforts inspire the holistic growth and transformation of the communities with significant improvements in sanitation, education, health and overall quality of life.



Karunodaya
Foundation



SHIKSHARTH
Every Community Contributes to Learning

MEET OUR ENABLERS



Aatapi Seva Foundation evolved in response to the needs that emerged in the course of a baseline study conducted in four villages of Gajera, Piludara, Kareli and Vedach villages in Jambusar taluka of Bharuch district, Gujarat. Aatapi's interventions **stress Financial Inclusion, with emphasis on women's empowerment. Natural Resource Management and conservation, encouraging scientific practices to enhance traditional sources of livelihood such as agriculture and animal husbandry and developing Alternative Sources of Livelihoods.** Aatapi believes that the journey from disempowerment to empowerment is a process of negotiating, redefining and pushing boundaries to claim a dignified space in society for the underprivileged and the marginalised.



Karunodaya
Foundation



SHIKSHARTH
Every Community Contributes to Learning

MEET OUR ENABLERS



Anantmool Foundation is addressing the **issue of gender diversity** and inclusion by questioning existing norms and introducing an alternative system where gender no longer exists as a stereotype. They are working on starting India's first gender-free learning centre for all children in Jamui, Bihar, India.



Karunodaya
Foundation



SHIKSHARTH
Every Community Contributes to Learning

MEET OUR ENABLERS



Ujhala Foundation is a non profit founded to support communities through integrated development approach by focusing on thematic areas of health, livelihood and education.



Karunodaya
Foundation



SHIKSHARTH
Every Community Contributes to Learning

MEET OUR ENABLERS



Aruna Creative Minds provides a happy learning environment(school) for children with learning disability/slow learners.



Karunodaya
Foundation



SHIKSHARTH
Every Community Contributes to Learning

MEET OUR ENABLERS



Grameena Vikas Sangham

Grameena Vikas Sangham is a registered community development organization located in Srikakulam district of Andhra Pradesh. It works towards **achieving comprehensive village development through empowerment in villages**. GVS intends to bring about a real and lasting change in all dimensions through an active synergy of efforts of the locals, social activists, and philanthropists, and its distinct programmes.



Karunodaya
Foundation



SHIKSHARTH
Every Community Contributes to Learning

MEET OUR ENABLERS



SANRAKSHAN is a national non-governmental organisation established in 2020 by a passionate group of people who have spent more than 21 years in **protecting vulnerable children**. Together, the board members have worked with sector-leading organisations including SATHI, Save the Children, UNICEF, Childline India Foundation, TATA Trusts, Every Child and PHD Chamber of Commerce & Industry.

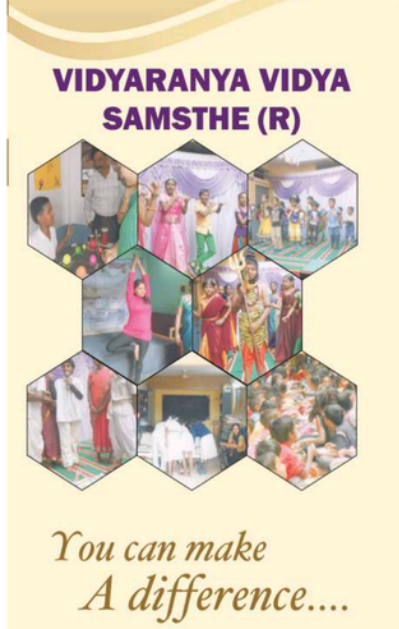


Karunodaya
Foundation



SHIKSHARTH
Every Community Contributes to Learning

MEET OUR ENABLERS



Vidyaranya Vidya Samsthe is an educational institution located in a nondescript locality of Bengaluru called Cholarapalya, with a sole aim of **providing quality education to the underprivileged**. The institution has been serving the locality for over forty years now. The institution runs the school where the medium of instruction is Kannada, as they believe mother tongue is the best medium to communicate with the children from this locality. Keeping in mind the current trends where English has become a window for communication with the outside world, free spoken English classes are also arranged.



MEET OUR ENABLERS



InSIDE-North East as a non-profit organization is the culmination of passionate youth's quest for a better society; who themselves grew up in conflict environments and experiences all the hardship of life. They also promoted women initiated micro-enterprises support as part of women empowerment with the conviction that if a mother is empowered the whole family is empower. InSIDE-North East wishes to see the following qualities in young people: Enhanced self-esteem, Deep self-awareness, Positive attitude & mindset, Ability to appreciate a different culture, Ability to question stereotypes, Ability to empathize, Clarity about one's future plans and Career choices, a healthy life.



Karunodaya
Foundation



SHIKSHARTH
Every Community Contributes to Learning

MEET OUR ENABLERS



Thapa Bisrampur L.P.School (TBLPS) located at East Garo Hills Resubelpara Thapa Bisrampur Crc Thapa Bisrampur is one of the popular schools in India. The School has been rated by 5 people on iCBSE. This School is counted among the **top-rated Schools in Meghalaya with an excellent academic track record.**



Karunodaya
Foundation



SHIKSHARTH
Every Community Contributes to Learning

MEET OUR ENABLERS



PADASALAI (Centre for Skills-Development and Training), is a registered not-for-profit TRUST working across India since 2017, **focusing on alleviating poverty and social injustice.** They do this through well planned and comprehensive projects in education, health and environment. Their mission is to provide ‘people with opportunities to build a better future. Their vision is to ‘be the recognized leader in life’ in support of strong communities.



Karunodaya
Foundation



SHIKSHARTH
Every Community Contributes to Learning

MEET OUR ENABLERS



Graama bharathi's mission to empower the villages by providing quality education, connecting at spiritual level, ensuring good health, promoting natural farming practices and providing avenues for economic growth and sustainability. They envision holistic growth of the villages while preserving natural resources. They have has several aims and objectives which together would help realize in making the Indian villages independent and self-reliant. This dedicated team works tirelessly to ensure the projects get implemented with tangible results time and again.



Karunodaya
Foundation



SHIKSHARTH
Every Community Contributes to Learning

MEET OUR ENABLERS



Lakshya Jeevan Jagriti (LJJ) was started a decade ago by a group of passionate college students and their Trainer from Distance Learning college, who believed that anyone can be a learner. The ideas also evolved into a belief that **quality education and personal development** will enable those from humble backgrounds to **gain the requisite skills to not only be 'market-ready' but also evolve personally**. They believe in inspiring people to take action to change the world



Karunodaya
Foundation



SHIKSHARTH
Every Community Contributes to Learning

MEET OUR ENABLERS



Simple Education Foundation believes that ALL deserve an education that gives them the skills, knowledge and mindset needed to build a future, that's free from the fear of limited choices, doubt and discrimination. Their right to quality education cannot be determined by where they're born. To live in harmony in this ever-changing world, they believe our children will **continuously learn, reflect and grow into self-aware individuals who act with alignment in head, heart, hand, and soul in service of all beings.**

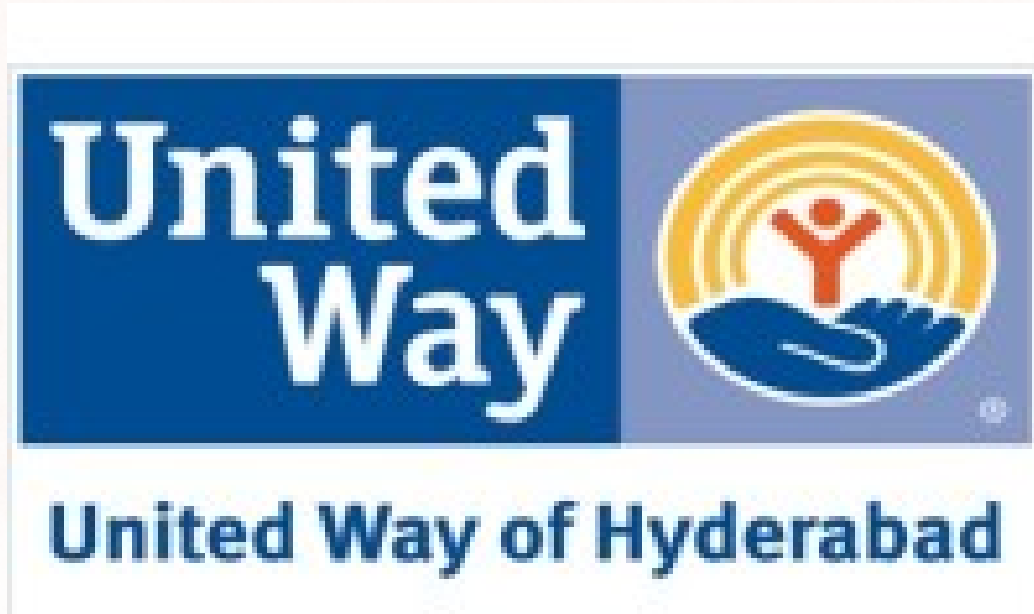


Karunodaya
Foundation



SHIKSHARTH
Every Community Contributes to Learning

MEET OUR ENABLERS



United Way Hyderabad improves lives by **mobilizing the caring power of communities to advance the common good**. Their vision is to create a world where all individuals and families achieve their human potential through education, income stability and healthy lives. Their mission is to improve lives by mobilising the caring power of the communities to create long-term social change and advance towards common good.



Karunodaya
Foundation



SHIKSHARTH
Every Community Contributes to Learning

MEET OUR ENABLERS



Bhumi is driven by Optimism. At Bhumi, they strive for meaningful change. Through volunteering, they aim to build a society that **empowers every individual to reshape the conversation with their voices and stories.** Among grassroots NGOs in India, Bhumi has a strong reputation for success. They are a leading NGO in India focusing on two areas: Education & Volunteer.



Karunodaya
Foundation



SHIKSHARTH
Every Community Contributes to Learning

MEET OUR ENABLERS



KHUSHII works tirelessly to keep children in school, **through holistic interventions that impact the community**. In just 19 years, KHUSHII has transformed the lives of over 1.5 million women and children. It's vision is that every child has access to realize their full potential through quality education and holistic learning to become young empowered leaders in the urban and the rural segments, to contribute towards a self-reliant India. It's mission is to prepare less privileged children of India through holistic support to succeed in a rapidly changing environment.



Karunodaya
Foundation



SHIKSHARTH
Every Community Contributes to Learning